

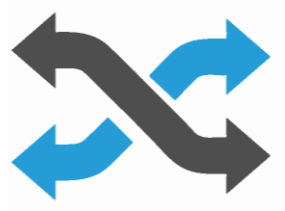


UN1

Your production solution

BRIDGE[®]
SYNERGY BETWEEN EXCELLENCE

MAIN FEATURES



Flexible

Stand-alone or In-Line
Automatic or Semi-automatic
Mass Production or High Mix
Fast setup change
Fully configurable (support,
handler, feeder, equipment)
Wide range processes
integration
On-field reconfiguration



Scalable

Fast and easy startup in
production
Fast In-Line integration
Modularity for
production growth
Production flow change



HMI

22" Tilting Touch
screen suitable for
production & service
Intuitive and easy
programming GUI



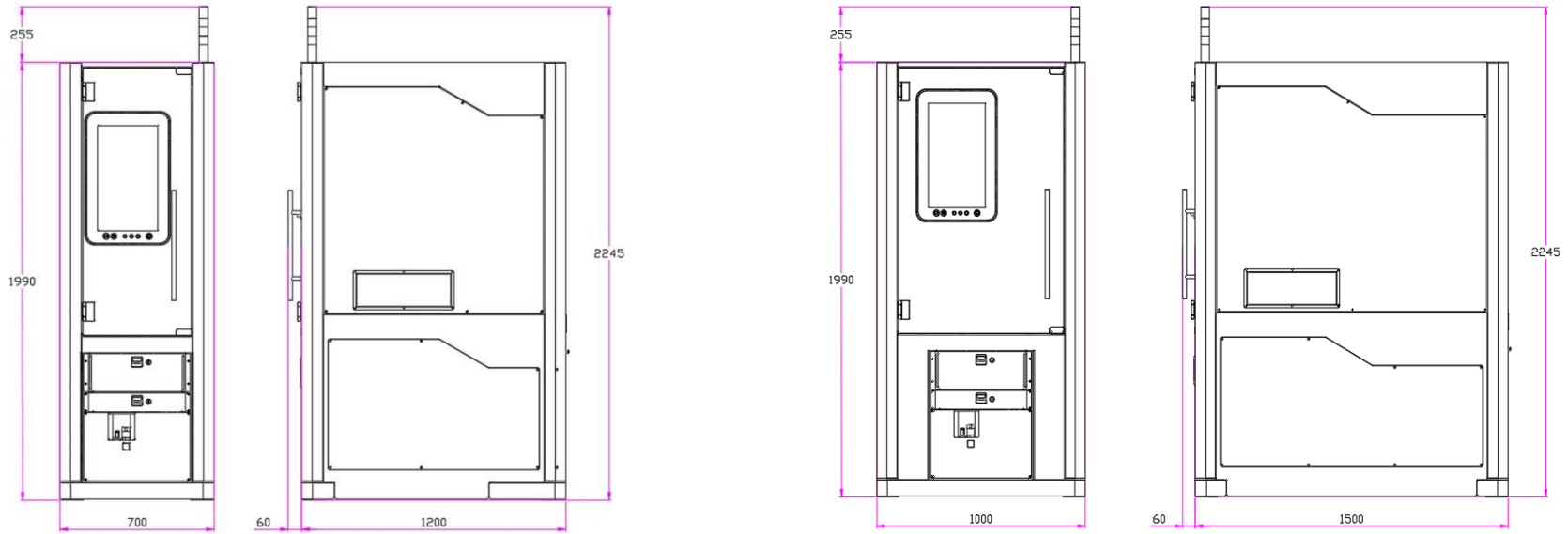
Green

Active Consumption
Control (ACC)
Air, power, data
consumption
monitoring: real-time &
statistics



Predictive maintenance

Scheduled intervention
with pre-set warning,
Work/failure data
analysis for predictive
maintenance



Footprint	700 x 1260 x 2245 mm	1000 x 1560 x 2245 mm
Weight	500 Kg	600 Kg
Frame	Electro-Welded Steel	
Control Unit	Proprietary - Housed in rear sliding room for easy access	
HMI	22" Tilting Touch Screen, multilanguage	
Standard colors	RAL 9002 Frame, RAL 7016 Side covers (others available as options)	
ESD	Compliant	
SMEMA	Compliant	
Air Supply	6 Bar filtered, 100 slpm - Base machine	
Power Supply	230 VAC monophase, 50 Hz - Base machine	
Consumption	1.5 kW - Base machine	
Connectivity	Ethernet (Wifi and VPN as options) - Industry 4.0 Compliant	
Traceability	Server connection for data storage (MES, SECS GEM and other protocols as options)	
Monitoring	Consumptions in real time and statistics; Work-Failure data for predictive maintenance	

BENEFITS: FLEXIBILITY LEVELS



LEVEL 1

DIFFERENT PRODUCTS: Manage product mix with dedicated software recipe or dedicated product-conversion-kit with quick setup.



LEVEL 2

DIFFERENT PROCESSES: Manage different kind of processes changing the equipment tools and easilily convert the application purpose to give a new life to your existing machine (example: from picknplace to test, from plasma to laser, every configuration is possible to be converted replacing the equipment tool!)



LEVEL 3

DIFFERENT WORK-FLOWS: Manage different kind of work-flows moving UNI in a different location of the line with easy plug&play method (example: for a new product the line must test in advance vs actual workflow, so you can easily move UNI where you need)

BENEFITS: SCALABILITY



UN1



SPLIT THE INVESTMENT TO FIT YOUR PRODUCTION NEEDS AND YOUR BUSINESS PROFITABILITY



UN1

CONFIGURATION

Easily set your UN1 configuration in 7-steps, with dedicated configurator:

1. BASE
2. MODULE
3. SUPPORT
4. HANDLER
5. FEEDER
6. EQUIPMENT
7. OPTIONS

Fantasy and Creativity are the only limits

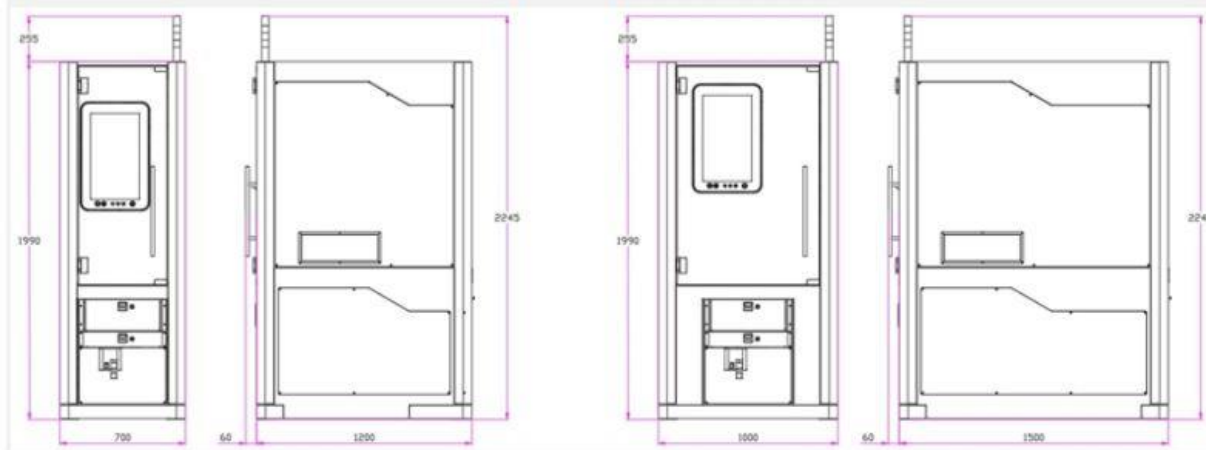


UN1 CONFIGURATOR

* Required

1

Choose your UN1 BASE *



700mm

1000mm

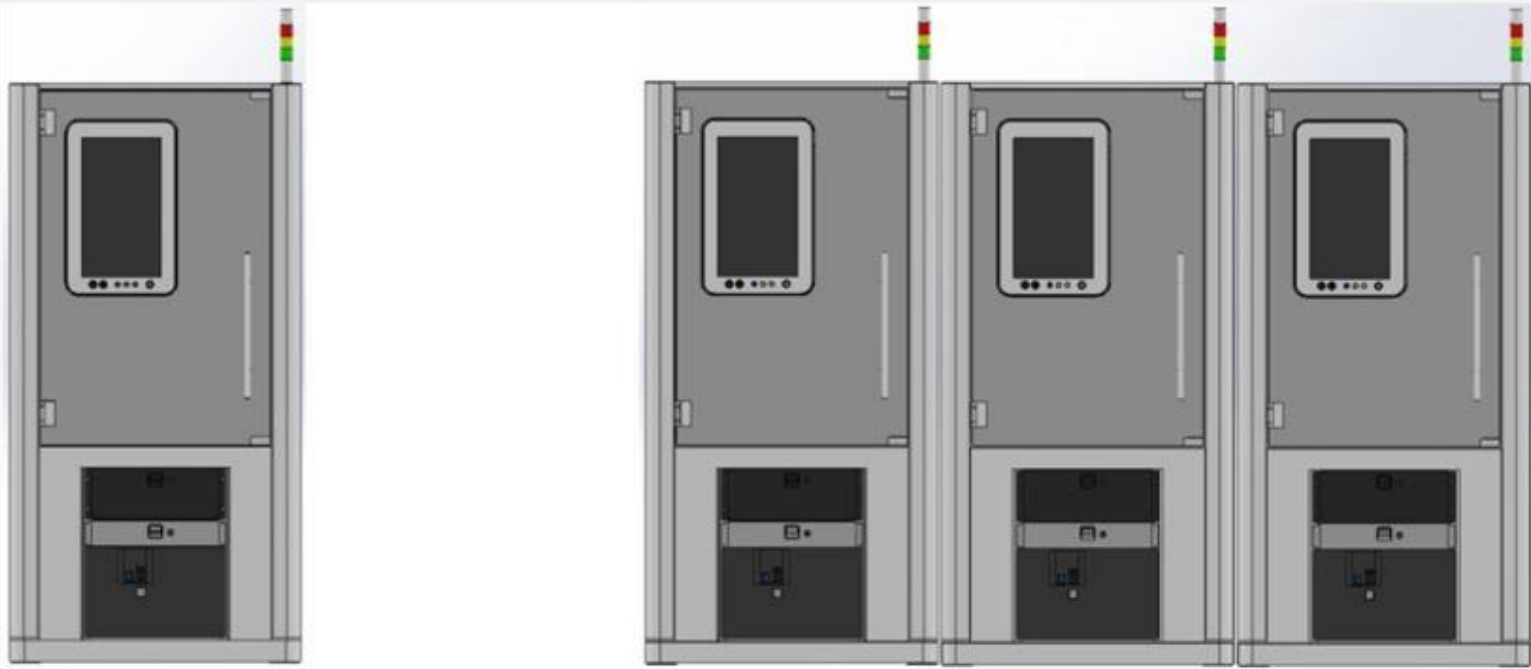
1. BASE

Pictures above are just an overview of the real configurator: to try it scan DM on the last slide



2

Choose your UN1 MODULE *



Stand-alone

In-line

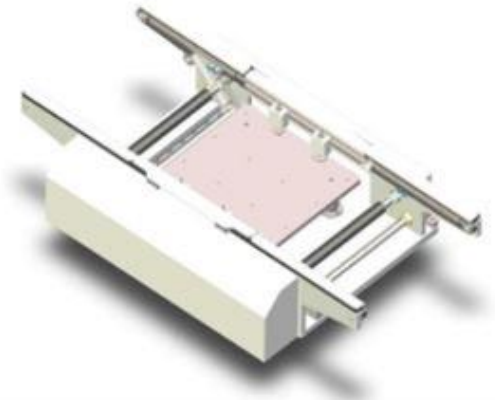
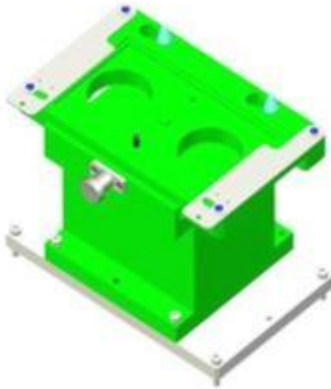
2. MODULE

Pictures above are just an overview of the real configurator: to try it scan DM on the last slide



3

Choose your UN1 SUPPORT *



- Fixed Jig
- Single Shuttle
- Double Shuttle
- Panel-PCB Conveyor
- Pallet Conveyor
- Without Support

3. SUPPORT

Pictures above are just an overview of the real configurator: to try it scan DM on the last slide

Choose your UN1 HANDLER *



- 1-Axis
- 2-Axis
- 3-Axis
- 4-Axis (Scara) EPSON T3: 3 Kg, 400mm range
- 4-Axis (Scara) EPSON T6: 6 Kg, 600mm range
- 6-Axis EPSON NX2: 2,5Kg, 450mm range
- 6-Axis EPSON C3: 3 Kg, 600mm range
- 6-Axis EPSON VT6: 6 Kg, 900mm range
- COLLABORATIVE 6-Axis Universal Robot UR3e: 3Kg, 500mm range
- COLLABORATIVE 6-Axis Universal Robot UR5e: 5Kg, 850mm range
- Without Handler
- Other

4. HANDLER

Pictures above are just an overview of the real configurator: to try it scan DM on the last slide

Choose your UN1 FEEDER *



- Bowlfeeder
- Anyfeeder
- Spring-feeder
- Screw-feeder
- Trayfeeder
- Jedec-tray feeder
- Tape & Reel
- Radial Feeder
- Stick Feeder
- Without Feeder
- Other

5. FEEDER

Pictures above are just an overview of the real configurator: to try it scan DM on the last slide



6

Choose your UN1 EQUIPMENT *



- Gripper
- Screwdriver
- Pressfitting-Assembly
- Plasma
- Dispensing
- Laser
- Vision/Check
- Test
- Without Equipment
- Other

6. EQUIPMENT

Pictures above are just an overview of the real configurator: to try it scan DM on the last slide



7

Choose your UN1 OPTIONS *



- Specific Painting Color
- Vacuum Cleaner
- Product Conversion Kit
- Jigs/Pallet
- Return conveyor
- UN1-Lift
- UN1-Buffer
- UN1-Dock
- KO Parts Sorting
- MES
- SECS GEM
- VPN Remote Connection
- Predictive Maintenance
- Without Options
- Other

7. OPTIONS

Pictures above are just an overview of the real configurator: to try it scan DM on the last slide

Scan to try it and set your UN1
CONFIGURATION!

